

References

Horowitz RA, Mazor Z, Miller RJ, Krauser J, Prasad HS, Rohrer MD: Clinical evaluation of alveolar ridge preservation with a β -tricalcium phosphate socket graft. *Compendium*; 2009 Dec; 30 (9): 588-603

"Clinical measurements showed preservation of the alveolar dimensions, and histological analysis confirmed both resorption of β -TCP (CERASORB®) and its conversion to vital alveolar bone. These characteristics make this graft material ideal for use after tooth extraction in conventional and implant dentistry."

Harel N, Moses O, Palti A, Ormianer Z:

Long-term results of implants immediately placed into extraction sockets grafted with β tricalcium phosphate: a retrospective study.

J Oral Maxillofac Surg 2013, 71 (2): e63-e68.

"In a retrospective 10 year comparison study, implantation in extraction sockets augmented with CERASORB® proved to be as good as implantation in natural bone."

Horowitz RA, Rohrer MD, Prasad HS, Mazor Z: Enhancing Extraction - Socket Therapy.

The Journal of Implant & Advanced Clinical Dentistry, 2009 Sept; 1 (6): 47-59

"The predictable formation of new vital bone in the extraction sockets treated with β -TCP of this and other studies has led to 100% success rates for the implants."

Modina T: Intellectual system of modern β -TCP materials and its role in periodontal surgery.

Poster No. P0189. Poster presentation on EUROPERIO 7, 7th Conference of the European Federation of Periodontology, Vienna/Austria 6-9 June 2012. Abstract.

"Longstanding multicentre scientific and clinical experience with CERASORB® in periodontal surgery shows that the bone regeneration process can be induced."

Soleymani Shayeste Y, Khorsand A, Mahvidy Zade S,

Nasiri M: Clinical and radiographic evaluation of pure beta-tricalcium phosphate and autogenous bone graft in treatment of two three-walled periodontal defects.

J Dent Med-Tehran University of Medical Sciences 2010; 23 (3): 183-190. (Abstract in English).

"Treatment with CERASORB® produced the same results as autogenous bone with regard to the improvement of two- and three-wall periodontal defects."

Breil-Wirth A, Jerosch J: Anwendung von CERASORB® Foam in der Orthopädie – eine prospektive Studie.

Deutscher Ärzte-Verlag OUP, 2014; 3 (12): 608-615.

"30 patients with a broad range of orthopaedic indications were included in the study. None of the patients showed material-associated complications or intolerance."

The resorption of the CERASORB® Foam began to be radiologically apparent in these patients after 6 weeks to 3 months and was largely complete after 12 months."

CERASORB® Foam is a ceramic bone replacement material that is easy to work with and very effective; it has a broad spectrum of application."

CERASORB® FOAM

Publisher:

curasan
Regenerative Medicine

curasan AG
Lindigstraße 4
63801 Kleinostheim
T +49 (0) 6027 40900-0
F +49 (0) 6027 40900-49
www.curasan.com
Germany

© curasan AG – 1108700113_09-2015_001

Alveolar filling with
double action:
assures volume and effectively
supports bone growth

curasan
Regenerative Medicine

Alveolar preservation with CERASORB® Foam

Dieter Bilk, Dental Practice: Bilk & Walz-Becker



Granulation tissue has been removed; cleansing of alveolus down to healthy bone



Distal alveolus filled with CERASORB® Foam



CERASORB® Foam adapts with slight pressure on alveolar edges



Saliva-proof wound closure

Indications and use

In maxillofacial surgery and dentistry CERASORB® Foam can be used in the following indications: Filling and reconstruction of two- and multiple-walled bone defects that are not infected, e.g. for

- filling alveolar defects after tooth extraction to maintain the alveolar ridge
- augmentation of the atrophied alveolar ridge
- filling of extraction defects to create an implant bed

Bone remains and necrotic tissue must be thoroughly removed before inserting the bone graft material. CERASORB® Foam needs to have direct contact with bleeding vital bone and the bone must be thoroughly freshened before insertion. CERASORB® Foam should be moistened before insertion, either with blood from the defect region or with physiological saline solution.

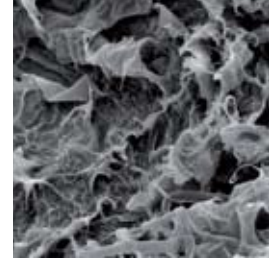
**CERASORB® Foam – easy handling:
malleable to fit defects
and convenient to position**

Composition

CERASORB® Foam products are bone graft materials that are resorbable, osteoconductive and similar to cancellous bone. They are made from β -tricalcium phosphate (β -TCP) and porcine collagen and are used for the filling and bridging of degenerative and traumatic bone defects.

Properties

The matrix structure of CERASORB® Foam supports the three dimensional regeneration of bone tissue. When in contact with vital bone, the synthetic bioactive ceramic material is absorbed by the body over a period of months and is simultaneously replaced with the body's own autochthonous bone. CERASORB® Foam is radiopaque



CERASORB® Foam – the right size to fill the alveolus.



When moistened with blood the material can be moulded to fit the defect.



CERASORB® Foam is convenient to position.



Relaxed insertion entirely without pressure.

Product safety

CERASORB® Foam is easy to handle. It can be moulded to fit defects and is convenient to place. No side effects and no interactions with drugs and other medical products have so far been reported.

Safe and well-tried

CERASORB® Granules have been in clinical use for over 15 years and have been discussed in more than 150 scientific publications. When embedded in collagen they become **CERASORB® Foam** which has double action, assuring volume and effectively supporting bone growth.